



THE ROLE OF RESEARCH IN THE ANTI-RAPE MOVEMENT

From Calling It Rape
to Social Impact Bonds





THE ANTI-RAPE MOVEMENT

Review and synthesis of
40+ years:

Research
Practice
Policy

THE ANTI-RAPE MOVEMENT

Approximately 40+ Years



Research: Systematic collection, analysis and reporting of data.

Practice:

Policy:

THE ANTI-RAPE MOVEMENT

Approximately 40+ Years



Research: Systematic collection, analysis and reporting of data.



Practice: Organized action or planned intervention.

Policy:

THE ANTI-RAPE MOVEMENT

Approximately 40+ Years



Research: Systematic collection, analysis and reporting of data.

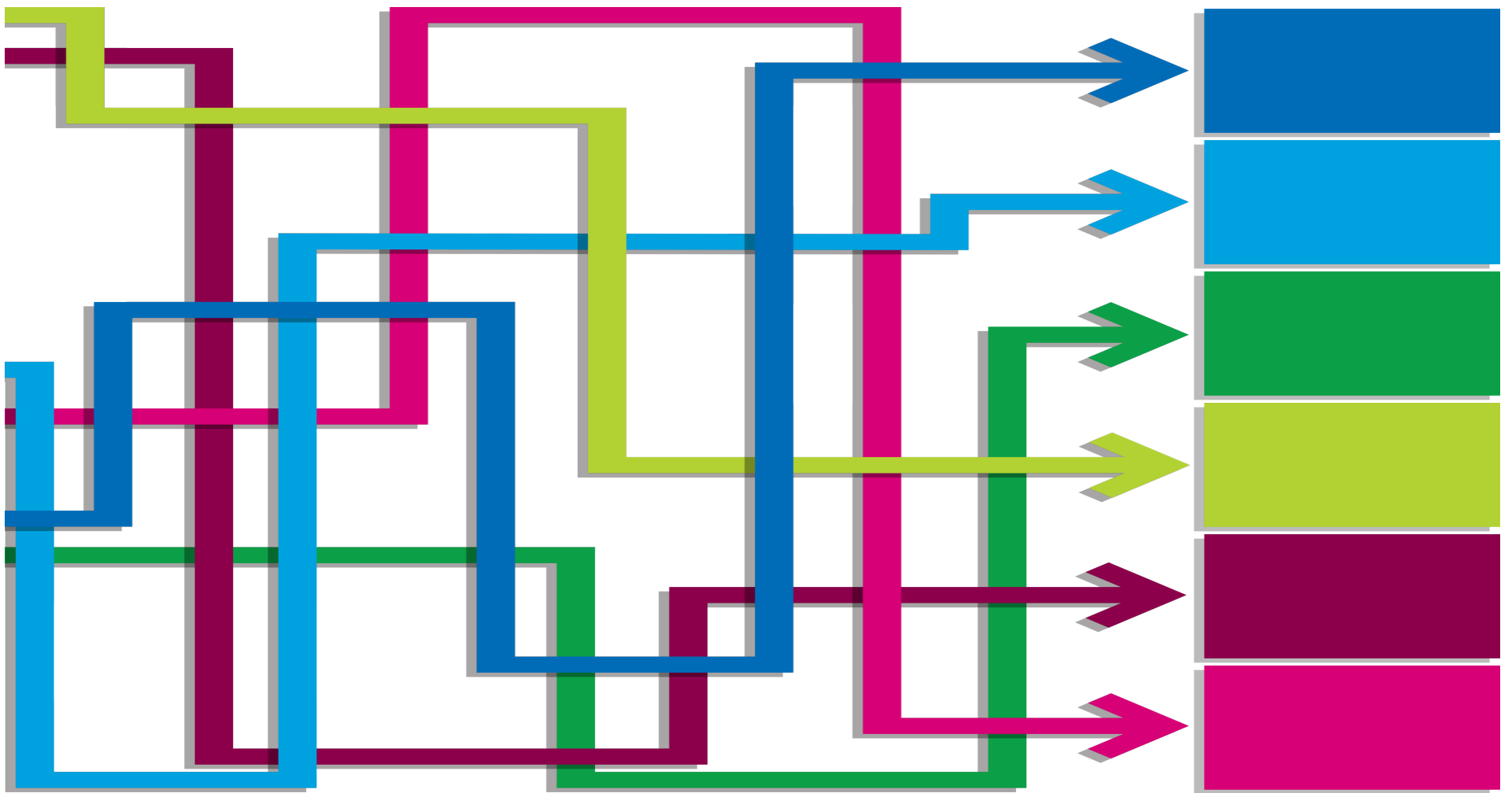


Practice: Organized action or planned intervention.



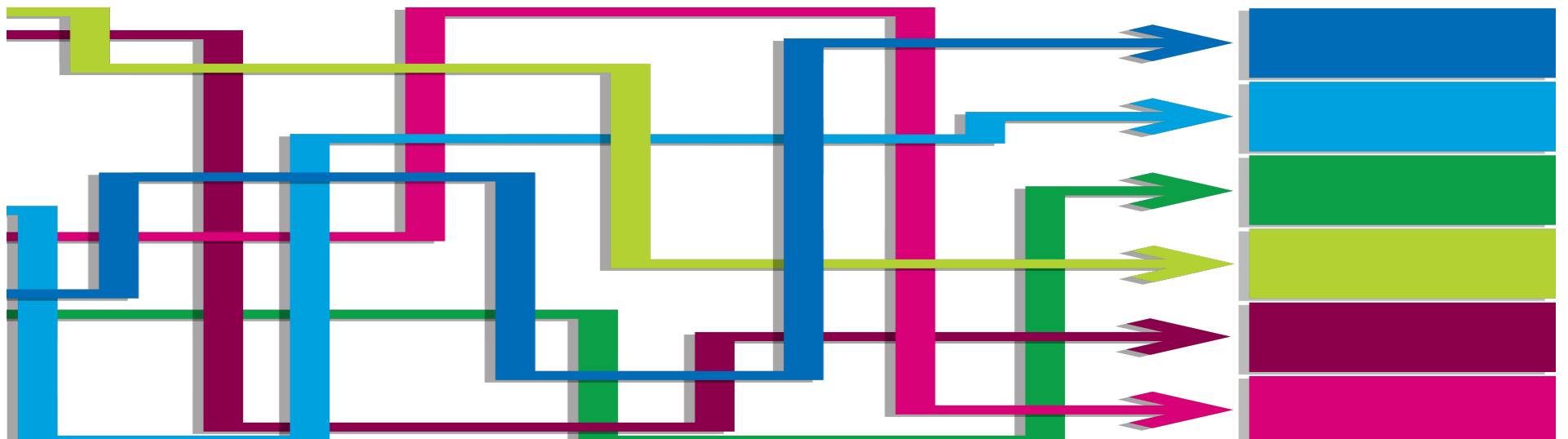
Policy: Institutionalized group values.

POLICY COMPLEXITY



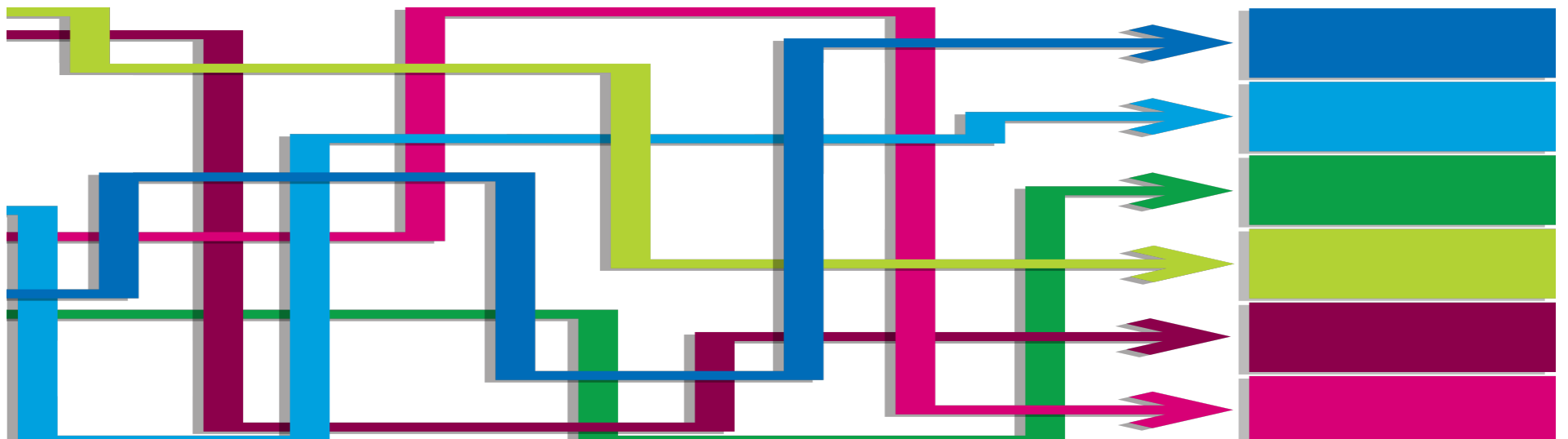
POLICY COMPLEXITY

- Multiple levels
- Implementation support



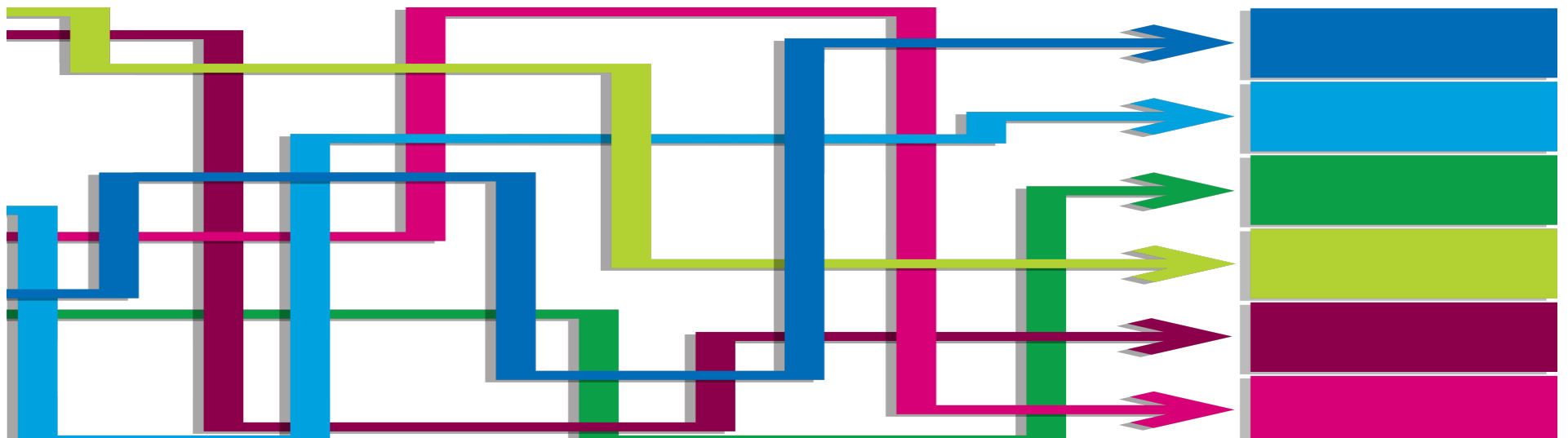
POLICY COMPLEXITY

- Multiple levels: Federal vs. Local
- Implementation support



POLICY COMPLEXITY

- Multiple levels: Federal vs. Local
- Implementation support: Funding, TA, Enforcement





ACTIVITY

#1



TIMELINE



1970'S...

Rape is Redefined: The Personal Is Political

RESEARCH - 1970'S

- Susan Brownmiller's (1975)
 - *Against Our Will*
- Ann Wolbert Burgess & Lynda Lytle Holmstrom's (1974)
 - *Rape Trauma Syndrome*
- Dean Kilpatrick, Patricia A. Resick & Lois Veronen's (1979)
 - *The Aftermath of Rape*



PRACTICE & POLICY 1970'S





1980'S...

One in Four Women

RESEARCH - 1980'S

- Martha Burt's (1980)
 - *Rape Myth Acceptance*
- Peggy Reeves Sanday's (1981)
 - *The Socio-Cultural Context of Rape*
- Mary Koss & Robin Warshaw's (1988)
 - *Hidden Rape*



PRACTICE & POLICY 1980'S





1990'S...

Rape is Violence Against Women: A Crime to Be Controlled

RESEARCH - 90'S

- Diana Russell's (1990)
 - *Rape in marriage.*
- Alan Berkowitz's (1994)
 - *Men and rape.*
- Sarah Ullman's (1995, 1996, 1999)
 - *Social reactions to sexual assault victims.*



PRACTICE & POLICY 1990'S





2000'S...

Ready for Prevention

RESEARCH - 2000'S

- David Lisak's (2002)
 - *Undetected rapists*
- Victoria Banyard et al's (2004, 2007, 2008, 2009)
 - *Bystander education*
- Max et al (2002) & Post et al (2004)
 - *Economic toll/Cost of sexual violence*



PRACTICE & POLICY 2000'S





2010'S...

Ending Rape

RESEARCH- 2010'S

- Black et al's (2011, 2013)
 - *National Intimate Partner and Sexual Violence Survey Summary Report*
- National Research Council's (2014).
 - *Estimating the incidence of rape and sexual assault*
- DeGue et al's (2014)
 - *A systematic review of primary prevention strategies for sexual violence perpetration*

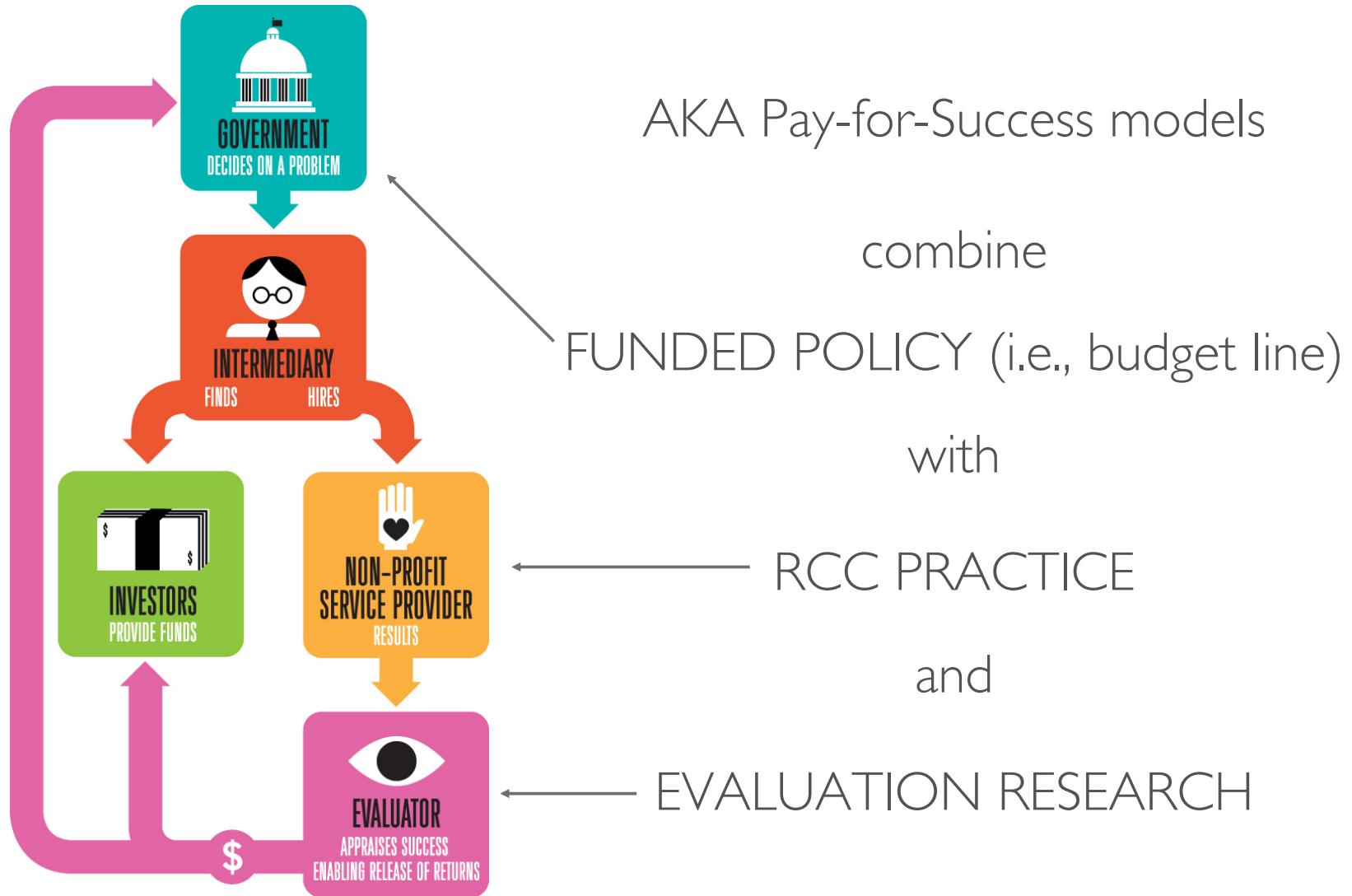


PRACTICE & POLICY 2010'S

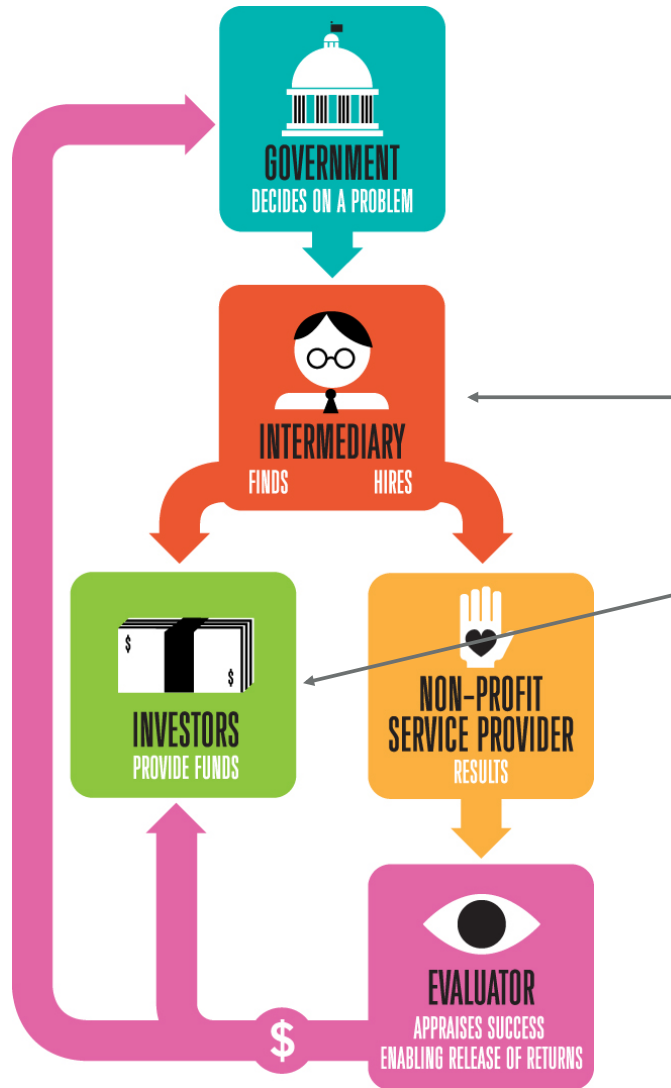


BRINGS US TO THE EDGE:
TODAY

SOCIAL IMPACT BONDS



SOCIAL IMPACT BONDS

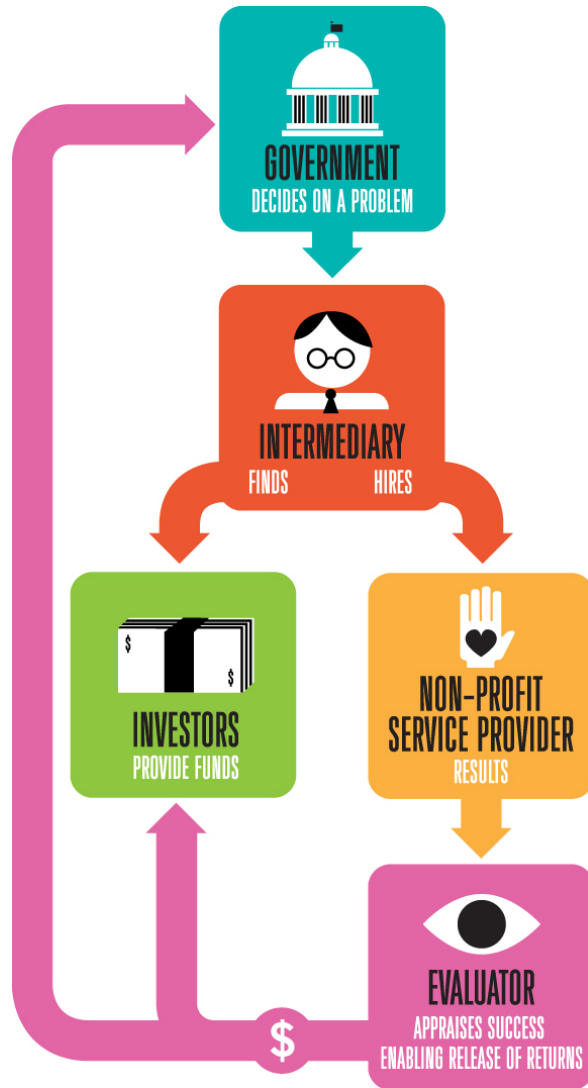


They do it

via a new type of relationship that

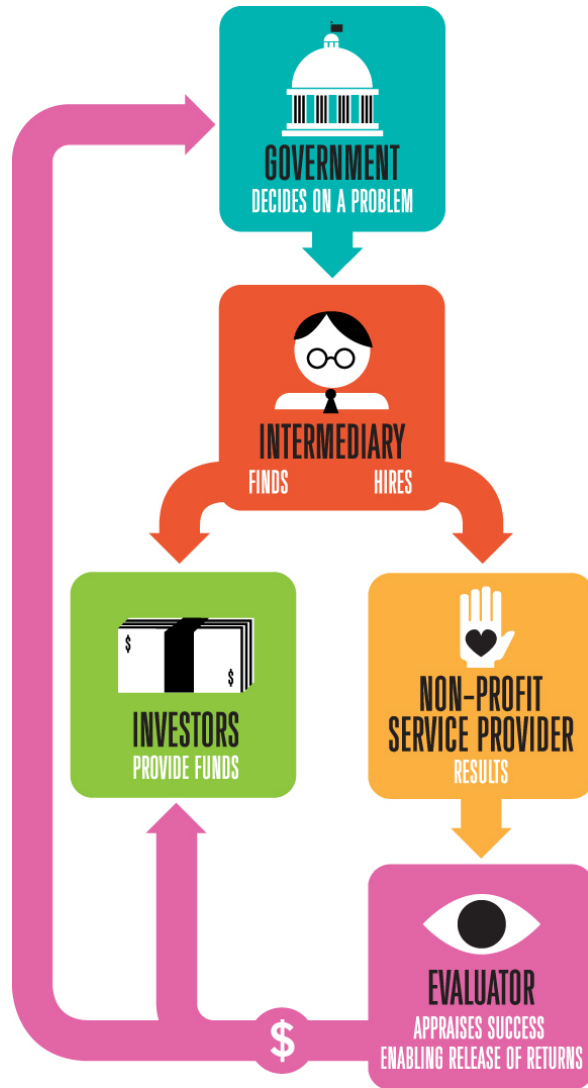
attracts **NEW FUNDING**
in the form of
private capital investment

SOCIAL IMPACT BONDS



Investors are paid back their
initial investment
+
a profit

SOCIAL IMPACT BONDS



Investors are paid back their
initial investment
+
a profit

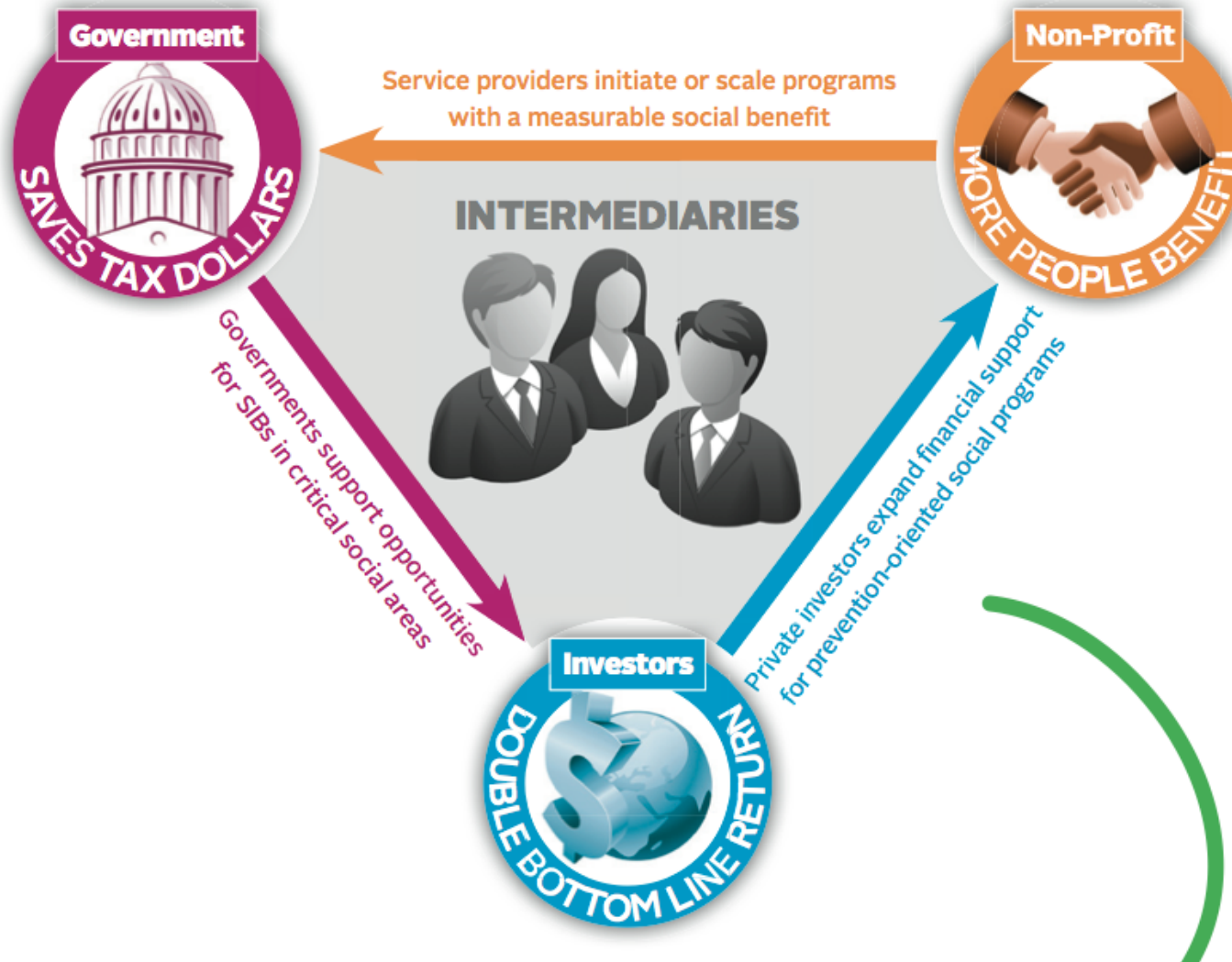
Currently:

traditional philanthropic sector is
underwriting the “pilot projects”

The SIB Structure

Tapping into private potential is central in creating added value with SIBs

SIBs partner the government, private, and non-profit sectors to deliver a measurable social benefit. SIBs represent a **WIN-WIN-WIN** by cutting costs, rewarding success, and ensuring performance and accountability.



SIB's

are innovative because they

PARTNER

government
+
private sector
+
nonprofit sector

Social Impact Bonds



Financial Crunch

SIBs are an innovative financial tool to help state and local governments facing tough budget decisions fund critical social programs. In 2013, states face **\$85 Billion in Federal grant cuts**.

Federal funding cuts to states include...



Expanding the Pie

SIBs create new funding streams and help put impact investing capital to work. Philanthropes and foundations help support critical social programs across various initiatives, with

\$37.3 Billion

in estimated giving in 2011. Bringing private resources to impact investing

EXPANDS THE PIE,

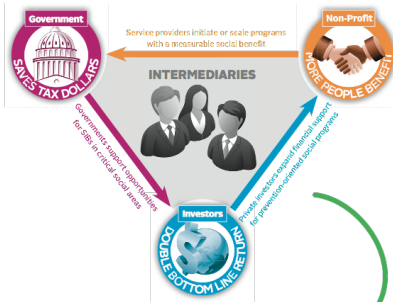
WITH UP TO \$1 Trillion

in potential commercial capital over the next ten years. Social impact bonds represent one vehicle for applying impact investing dollars.

The SIB Structure

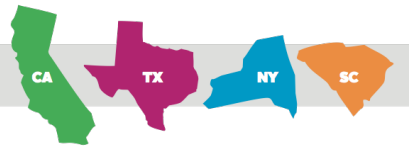
“Tapping into private potential is crucial in creating added value with SIBs.”

SIBs partner the government, private, and non-profit sectors to deliver a measurable social benefit. SIBs represent a **WIN-WIN-WIN** by cutting costs, rewarding success, and ensuring performance and accountability.



Momentum of SIB Network

The Rockefeller Foundation has helped establish a SIB ecosystem by building networks between stakeholders in the US. To date, there are **state and local governments** using SIBs to tackle a range of issues, including:



California is exploring options for SIBs at the state and local level, addressing issues from health care to supportive housing

Texas is using SIBs for chronic disease management within low-income communities, targeting cardiovascular and lung disease

New York City is launching a SIB to address youth recidivism rates by juvenile offenders leaving Rikers Island

South Carolina is scaling a nurse-family partnership program aimed at reducing infant mortality rates

www.rockefellerfoundation.org/social-impact-bonds

For example:

Rockefeller Foundation
is subsidizing 6 start-up projects in:
CO, CT, IL, NY, OH, SC

and providing technical assistance from
Social Impact Bond Technical Assistance Lab
at
Harvard Kennedy School

A Framework for Thinking About Evidence



Sharon Wasco, PhD

sharon.wasco@gmail.com

Ashley Maier, MSW, MPA

ashley.maier@calcasa.org

@ashleycalcasa

@ashleymaier



THANK YOU

