

Human Trafficking at Asian Massage Parlors

Krista Hoffman

Training & Technical Assistance Consultant

MBO Partners

Hoffman, K. Human Trafficking &
Technology. National Sexual Assault
Conference; Pittsburg, PA (2014).

Is this trafficking?



Hoffman, K. Human Trafficking & Technology. National Sexual Assault Conference; Pittsburg, PA (2014).

Who are Traffickers?

- Parents and other family members
- Boyfriends/husbands
- Pimps
- Other women
- Smugglers
- Agencies- Adoption, employment
- Strangers
- Drug dealers
- Gang members (street/local/international)

Hoffman, K. Human Trafficking & Technology. National Sexual Assault Conference; Pittsburg, PA (2014).

Tactics



Hoffman, K. Human Trafficking & Technology. National Sexual Assault Conference; Pittsburg, PA (2014).

Vulnerability

- Poverty
- Misogyny
- Prior physical or sexual violence
- Exploited cultural norms
- Lack of opportunities in home country
- Personal or family debt

What is debt bondage?



Hoffman, K. Human Trafficking & Technology. National Sexual Assault Conference; Pittsburg, PA (2014).

Cultural Considerations & Debt Bondage

- Family responsibility
- Shame
- Spiritual beliefs

Networks

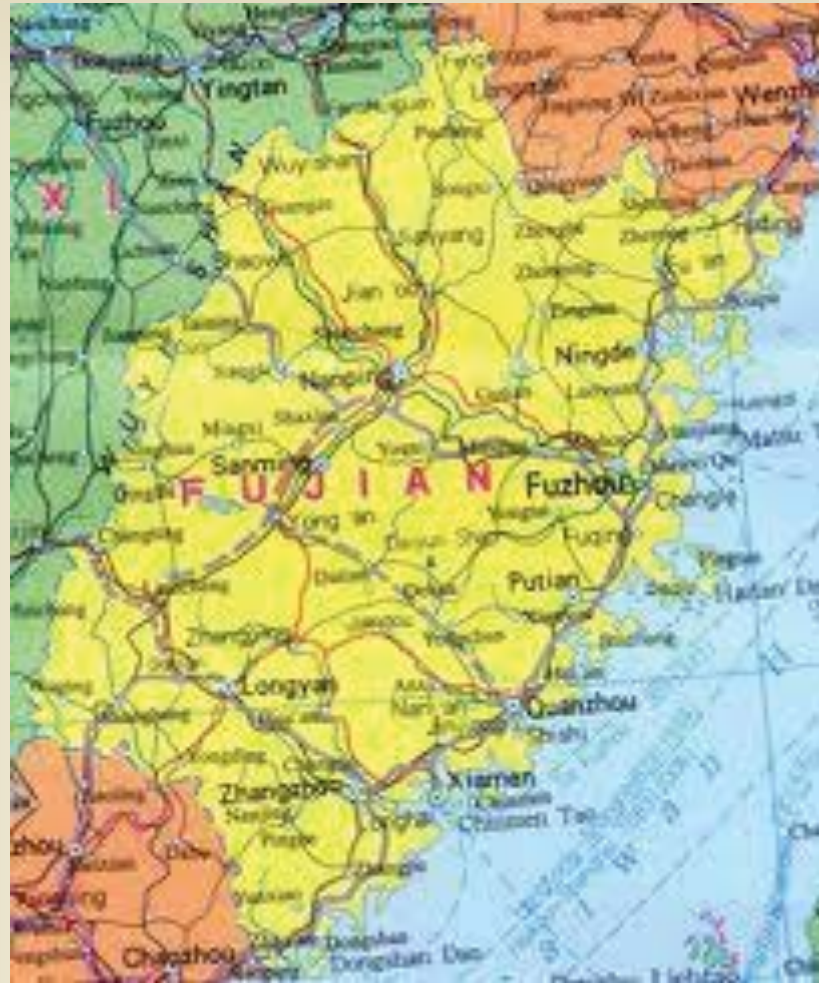


Hoffman, K. Human Trafficking & Technology. National Sexual Assault Conference; Pittsburg, PA (2014).

Networks

- Street gangs
- Collaborations
- International Criminal Enterprises
Fujian Provenance, China -> Flushing, NY -> Eastern
United States

Fujian Province, China



Hoffman, K. Human Trafficking & Technology. National Sexual Assault Conference; Pittsburg, PA (2014).

Flushing, NY



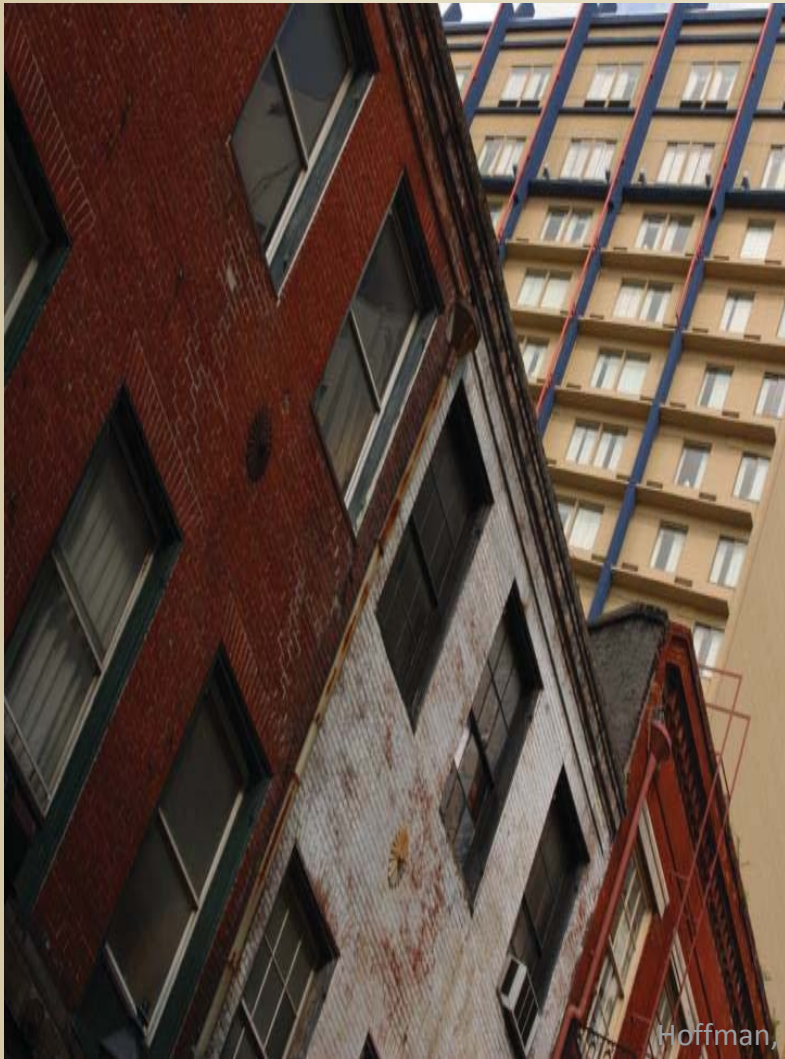
Hoffman, K. Human Trafficking & Technology. National Sexual Assault Conference; Pittsburg, PA (2014).

Eastern United States



Hoffman, K. Human Trafficking & Technology. National Sexual Assault Conference; Pittsburg, PA (2014).

Exteriors



Hoffman, K. Human Trafficking & Technology. National Sexual Assault Conference; Pittsburg, PA (2014).

Possible signs of fronts for sex trafficking

- Hours of operation
- Girls living on premises
- Back entrances
- Privacy from other patrons
- Frequent change in girls
- Unable to understand English
- Girls do not leave premises
- Featured on hobbyist websites
- All male clientele
- Covered windows
- Unadvertised location
- Cameras and buzzers at front door
- Connection with Flushing, NY
- Advertisements mention ethnicity, new girls, or level of attractiveness of workers

Purchasers of sex trafficking victims

- www.Eroticmp.com
- www.Ratemyspa.com

Methods to control victims of human trafficking

- Physical abuse
- Sexual abuse
- Emotional control-
Victims believe they have
no where else to go or
they owe the
trafficker/pimp for
“helping” them
- Black mail
- Starvation
- Isolation
- Psychological
control/abuses
- Document withholding
- Debt bondage
- Threats of deportation
- Threats against the
victim’s family
or friends

Social Indicators

- Victims rarely come and go as they please. If they do there are rules they must follow
- Victims may be taken with parents/adults when they buy drugs
- Victims are often isolated from the community
- Victims who are minors may not be attending school
- Victims rarely are allowed to freely contact friends and family, including their children
- Victims may live where they work
- Victims may be driven to work and from work as a group

Societal Bias



Hoffman, K. Human Trafficking & Technology. National Sexual Assault Conference; Pittsburg, PA (2014).

Societal Acceptance



Hoffman, K. Human Trafficking & Technology. National Sexual Assault Conference; Pittsburg, PA (2014).

Locating Victims

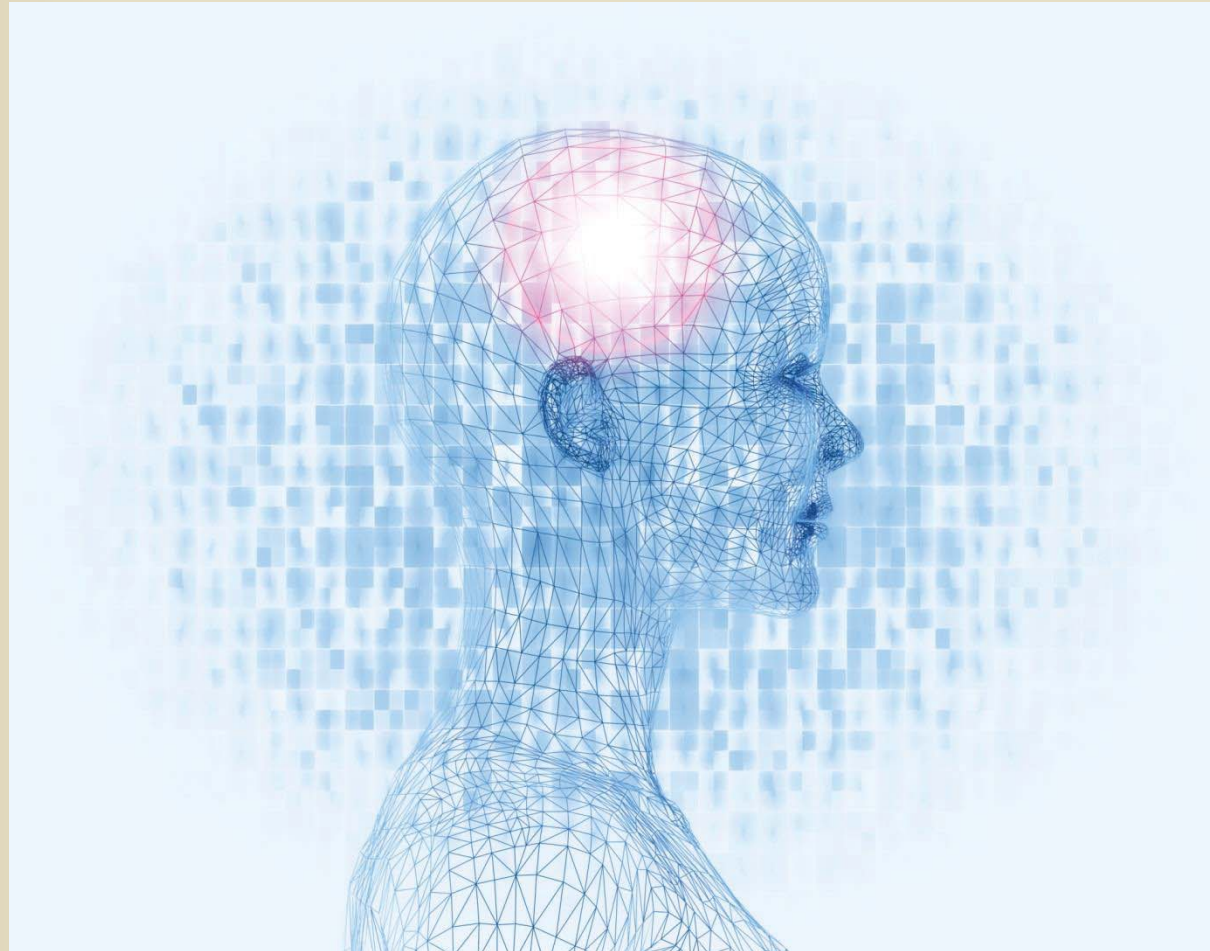


Hoffman, K. Human Trafficking & Technology. National Sexual Assault Conference; Pittsburg, PA (2014).

Victim Interview & Cultural Considerations

- Family responsibility
- Shame
- Spiritual beliefs

Focus of questions:



Hoffman, K. Human Trafficking & Technology. National Sexual Assault Conference; Pittsburg, PA (2014).

Case Example



Hoffman, K. Human Trafficking & Technology. National Sexual Assault Conference; Pittsburg, PA (2014).

Flip the Investigation

Labor trafficking

Forced to perform labor

Forced to work in certain location/venue

No/restricted access to documents

Payment is exploitive

Victim Self-care & Agency



Hoffman, K. Human Trafficking & Technology. National Sexual Assault Conference; Pittsburg, PA (2014).

Hotlines

- **Polaris 24-hour Tip Line: 1-888-373-7888**
- **Covenant House- 24-hour Tip Line: 1-800-999-9999**
- **DHS- Human Trafficking Hotline- 866-347-2423**
- **FBI's Innocence Lost Initiative, 1800-THE-LOST www.missingkids.com**
- **Call PA State Police Terrorism/Fugitive Tip Line – 1-888-292-1919**



Hoffman, K. Human Trafficking & Technology. National Sexual Assault Conference; Pittsburg, PA (2014).

Krista Hoffman
Training & Technical Assistance Consultant
MBO Partners
khoffman2@hotmail.com
717-724-7312

Hoffman, K. Human Trafficking &
Technology. National Sexual Assault
Conference; Pittsburg, PA (2014).